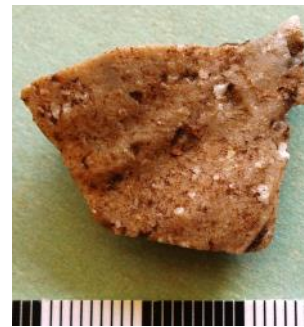


*We acknowledge the Traditional Custodians of this land - the Wiradjuri people.  
We recognise their continuing connections to lands, waters and communities and we pay respect to Elders  
past, present and emerging.*



In May 2020, **Aboriginal stone artefacts** were found on the Griffith Base Hospital site.

**271 small stone artefacts**, measuring 14mm to 28 mm, were located during archaeological investigations.



The artefacts were mostly found in gravel which is believed to have been brought to the health campus for landscaping. Artefacts found at a separate location to the gravel appear to be evidence of **an Aboriginal campsite** which could be several 1000 years old.



The artefacts are described as bipolar flakes - a very specific flaking technique used to make stone tools from very small pebbles. The tools were used as **cutting and/or scraping implements**.

This is a **very important discovery** for the Aboriginal community and the history of Griffith.



The long term management of the artefacts will be in accordance with the Care Agreement developed by **Griffith Local Aboriginal Land Council** and **Heritage NSW** to ensure safekeeping.

**Keep up to date with the Griffith Base Hospital Redevelopment:**

**[MLHD.health.nsw.gov.au/GBHRedev](https://mlhd.health.nsw.gov.au/GBHRedev)**